
EXPOSURES

Springfield Photographic Society

Photo challenges

September: Sea Life

October: Tombstones

November: Expression

December: Treasure

January: Bridge(s)

February: Starts with P

March: Glass

April: Chairs

May: Celebration

Rosenstock to speak

The guest speaker on Nov. 16 will be Ron Rosenstock. A tour leader for Strabo Tours, he has conducted excursions in Maine, Greenland, Iceland, Ireland, Scotland, Italy and Northern Africa. He shot large-format film up until a couple of years ago and is now using a digital camera. He posts his images on Facebook. He shoots color occasionally, but is best known for his stunning black and white photography.

Welcome

Welcome to a new SPS member, Esther Husted, who attended the workshop meeting on Oct. 26.



Jenny Farm stands out against colorful foliage during an SPS trip to Vermont Oct. 11. (Chris Laudani photo)

SPS members trek to Vermont to photograph autumn foliage

Six SPS members traveled to Vermont Oct. 11 to capture the autumn colors, starting at the Jenny Farm near Reading.

Attending were Guenther Schubert, Jerry Nardi, Marty Espinola and John and Grace Fleming. The trip was organized by Chris Laudani.

When the group arrived at the farm just after 10 a.m., the sky was deep blue and the trees were vivid shades of red, yellow and orange, creating a scenic backdrop for a nearby covered bridge and a pre-Civil War cemetery.

Later, the group had lunch in Ludlow and stopped at a museum featuring a demonstration by a tinware craftsman. Capping the day were a visit to the Harriman Reservoir to see autumn colors reflected in the water and a stop at the overlook on Route 9 east of Wilmington.

35 members attend photo workshops

Macro photography “opens a whole new world,” Ron Belovitz said as he explained to a handful of members his excitement over the technique.

Ron was one of several presenters during a series of mini-courses presented Oct. 26 at a club meeting.

The round-robin format allowed 35 members to sample at least three mini-courses, most software-related, of about 30 minutes each.

Belovitz displayed macro lenses, lens extenders, a flash unit and other tools of macro photography during his talk.

Rosemary Polletta showed members how to prepare prints for exhibition at the club. She urged them to use gloves and a mask while spraying adhesive of photos to mount on foam board.

Also leading discussions were Chris Laudani, preparing digital images for exhibition, Tim Donelan, Photoshop filters, Chuck Bentley, layers and masking, Cindy Nothe and Nancy Bryant, Lightroom basics, and Paul Deegan, correcting chromatic aberration.

The session was designed to offer members a chance to learn by doing. The program was repeated from previous years because of its popularity.

SPS is also planning excursions that will feature instruction about camera equipment and settings.



Ron Belovitz, right rear, explains macro photography to six club members. (Cindy Nothe photo)



Paul Deegan demonstrates how to deal with chromatic aberration. (Cindy Nothe photo)

Competition results - Prints and projected images for October

Judges: Paul Deegan, Tim Donelan, Kevin Fay, Chris Laudani

PRINTS

Large Color

Eileen Donelan	Bearhat Mt. and Hidden Lake	29	HA
Gail Dinsmore	Lovely Lumahai	28	HA
Fred LeBlanc	This Is Windjamming	27	HA
Rosemary Polletta	Another Misty Morning, N.S.	27	HA
Kevin Fay	The Gingerbread House	25	
Charles Strong	Crater Lake	25	
Cindy Nothe	Campfire at Dusk	22	
Charles Strong	Butterfly (M)	28	HA
Cindy Nothe	Clouds (M)	26	HM

Small Color

Gail Dinsmore	“Daisy . . . Daisy”	25	HM
Cindy Nothe	Upside Down and Sideways	25	HM
Rosemary Polletta	Grape Hyacinth	25	HM
Kevin Fay	Doors to the Old Store	24	
Charles Strong	Confederate Mortar Commander	23	
Cindy Nothe	Red Shouldered Hawk (M)	24	

Small Black & White

Kevin Fay	Sunderland Barns	27	HA
Rosemary Polletta	Urban Still-Life	23	
Charles Strong	Georgic Forest (M)	24	

Artistic

Rosemary Polletta	An Apple and Two Mangos	26	HM
Gail Dinsmore	Celestial Celebration	24	

PROJECTED IMAGES

General

Madeline Duval	The Gull at Needle Rocks	29	HA
Judy Bolio	Psst! I Have to Tell You a Secret	27	HA
Nick DeCondio	Jolie	27	HA
Mary Amato	A Painter’s Meadow	26	HM
Chuck Bentley	Berkshire Botanical Garden	26	HM
Amy Dane	Strawberry Seller	26	HM
Eileen Donelan	About to Open	26	HM
Steve Greenberg	Perseverance	26	HM
Larry Sanchez	Rockport Quarry	26	HM
Nancy Bryant	Lake Reflections	25	
Tim Donelan	The Road to Nowhere	25	
Chris Laudani	Sanderling on the March	25	
Ron Belovitz	Hancock Shaker Barn	24	
Gail Dinsmore	And Then There Was Light	24	
Kevin Fay	Storrowton Green	24	
Barbara Krawczyk	Pond With Fall Colors	24	
Cindy Nothe	Plein-Air Painting	24	
Sylvia Pyzocha	On Mt. Mansfield	24	
Jim Theres	Floral Splendor	24	



Yellow Lesser Legs by Sylvia Pyzocha

Black & White

Amy Dane	Gold Mining Village	27	HA
Madeline Duval	The Standing Stones	27	HA
Judy Bolio	Foxy	26	HM
Tim Donelan	Bear Hump View	26	HM
Kevin Fay	A View from the Barn	26	HM
Steve Greenberg	Caloosahatchee River	25	
Barbara Krawczyk	What Are You Reading?	25	
Mary Amato	Love Grows on Trees	24	
Nancy Bryant	Fish House	24	
Sylvia Pyzocha	Window on Eighth Street	24	
Nick DeCondio	A Walk in the Park	23	
Chris Laudani	Blue Jay	23	

Artistic

Chris Laudani	Three Iris Image	28	HA
Chuck Bentley	New Hampshire Train Station	27	HA
Nancy Bryant	Azalea	27	HA
Amy Dane	Ship Ahoy	27	HA
Madeline Duval	Milky Way on Holland Pond	27	HA
Barbara Krawczyk	Spring at Ipswich River	27	HA
Sylvia Pyzocha	Hanging by a Limb	27	HA
Gail Dinsmore	Soft Splendor	26	HM
Mary Amato	Awaiting Passengers	25	
Eileen Donelan	Water Patterns	25	
Tim Donelan	Floating Leaf	25	
Kevin Fay	The Painted Lady	25	
Cindy Nothe	Silo in the Woods	25	
Jim Theres	Two of a Kind	25	
Ron Belovitz	Rusty Old Truck	24	
Judy Bolio	Black-Capped Chickadee	24	
Steve Greenberg	Salve Regina University	24	
Nick DeCondio	Red Leaf Cabbage Close-Up	23	

(See **COMPETITION** on Page 4)

COMPETITION
(Continued from page 3)

Nature

Nancy Bryant	You Cannot See Me	27	HA
Madeline Duval	The Song of Twilight	27	HA
Sylvia Pyzocha	Yellow Lesser Legs	27	HA
Tim Donelan	St. Mary's Rainbow	26	HM
Ron Belovitz	Moss Glen Falls	25	
Nick DeCondio	Hawk in the Tree	25	
Eileen Donelan	Alpine Wildflowers on the Trail	25	
Judy Bolio	Ravaged Birch	24	
Gail Dinsmore	Pelican Perches	24	
Kevin Fay	Time for a Drink	24	
Barbara Krawczyk	Sanderson Brook Falls	24	
Jim Therese	Looking Around	24	
Amy Dane	Seen Better Days	23	

PRINTS AND PROJECTED IMAGES:

Photo Challenge: Tombstones

Kevin Fay	Icelandic Tombstone	27	HA
Judy Bolio	Tombstone Lichen	26	HM
Eileen Donelan	I Went That Way	26	HM
Steve Greenberg	This Way Up	25	
Barbara Krawczyk	Visitor to Sorrow	25	
Rosemary Polletta	A Cold and Eerie Sight (Print)	25	

Larry Sanchez	Rockport Tombstone	25
Chuck Bentley	Hope Cemetery Works of Art	24
Amy Dane	They Don't Make Them Like They Used To	24
Tim Donelan	Burial Hill	24
Chris Laudani	Cemetery Montage	24
Cindy Nothe	Tombs With a View	24
Nancy Bryant	Graveyard	23
Gail Dinsmore	Out for the Night	22
Sylvia Pyzocha	The Road Not Taken	22
Nick DeCondio	Seaweed on Shore (M)	24

Free digital photography refresher

Looking for a great place to brush up on digital photography?

Try the link below to the course first taught by Marc Levoy at Stanford University and revised as an online course.

The university and Google made it available for free on the Internet. Here's the site: <https://sites.google.com/site/marclevoylectures/home>

SPS Officers and Directors

Elected positions

President	Kevin Fay
Vice President (Prints)	Rosemary Polletta
Vice President (Projected Images)	Ron Belovitz
Treasurer	Cindy Nothe
Secretary	Nick DeCondio, MNEC
Directors	Karen Geaghan, MNEC
	Chuck Bentley
	Judy Bolio
	Karen Lemoine
Non-elected Director	Chris Laudani

The non-elected director is the immediate past president.

Appointed positions

Newsletter	Jim Gillen
Judge Coordinator/Exhibition Standards	Barb Krawczyk
Loomis Gallery Curator	Rosemary Polletta
Membership Chair	Ron Belovitz
Publicity Coordinator	Cindy Nothe
Social Media	Nick DeCondio
Statistician	Ken Cook, MNEC
Trip Coordinator	Chris Laudani
Website Manager	Rachel Bellenoit

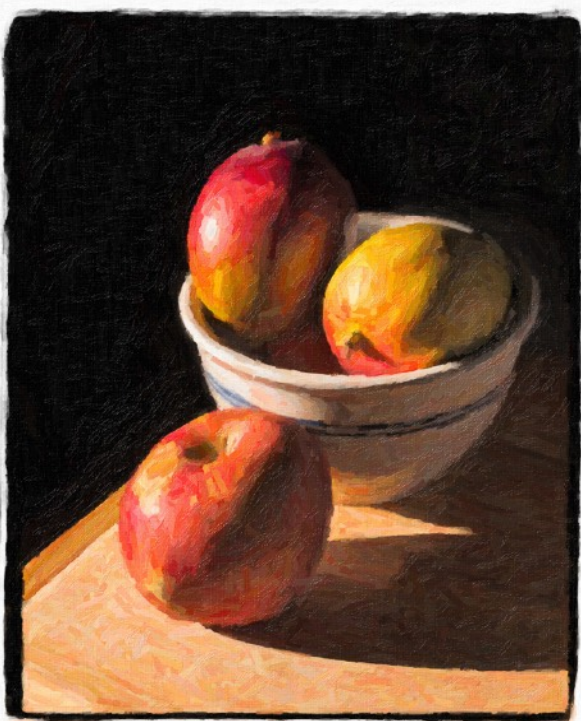
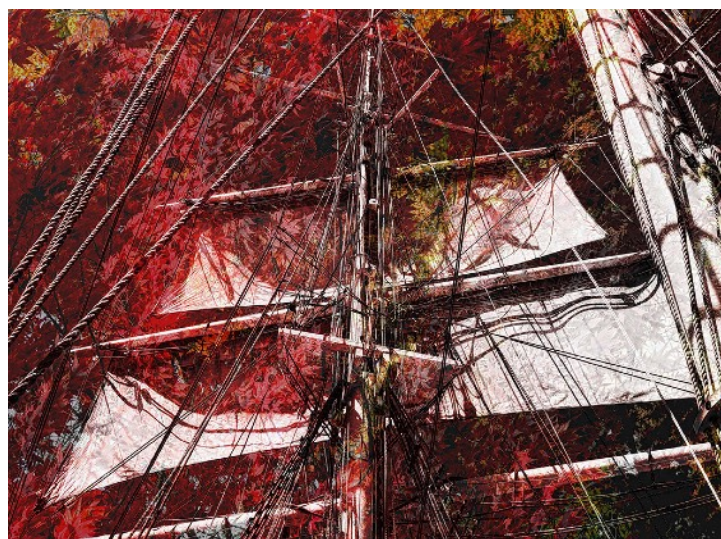
EXPOSURES

Exposures is the monthly newsletter of the Springfield Photographic Society. SPS is affiliated with the Photographic Society of America and the New England Camera Club Council. Society meetings are held at Loomis Lakeside at Reed's Landing, 807 Wilbraham Road, Springfield, at 7 p.m. on the 2nd and 4th Wednesdays of each month, September through May. The SPS website is sps.photoclubservices.com. President Kevin Fay can be reached at kevin.fay44@gmail.com



Highlights from the October exhibition

Springfield Photographic Society members exhibited some gorgeous photos in October. Here we have a sampling of some of the best. Right, is *You Cannot See Me* by Nancy Bryant, middle right is *Sunderland Barns* by Kevin Fay, bottom right is *Ship Ahoy* by Amy Dane, and below is *An Apple and Two Mangos* by Rosemary Polletta.



Holiday party planned for Dec. 28

Springfield Photographic Society’s holiday party will be held on Dec. 28 starting at 6 p.m. in the Longfellow Room at Loomis Lakeside/Reed’s Landing.

We want to mix things up this year and lower the cost so more people can enjoy the event. We’ll have a potluck-style buffet with dishes provided by members. For those who don’t wish to cook or contribute a store-bought dish, a donation of \$20 per person will allow us to purchase paper goods, soft drinks, and supplement the menu as needed.

There will be a social hour beginning at 6 p.m. and dinner will be served at 7 p.m. The program, beginning at 8 p.m., will be the presentation of small collections of 10 to 20 favorite images contributed by about 15 members. This has become a popular feature and is a terrific way to get to know our fellow photographers through their work – especially those who don’t typically enter monthly exhibitions. The collections do not have to be in a slideshow format and should not be set to music. They can be in a digital file folder or they

can be a group of prints, and the contributor can provide a brief introduction or a full narration of the collection as it is displayed. (For those who wish to provide slideshows set to music, the February member showcase is the best venue.)

Please complete the signup sheet below. Let us know if you plan to attend and whether you will contribute an appetizer, main dish, dessert (and specify the dish if you can), or a cash donation, and note if you will be showing your favorite images. Reservations must be made by Dec. 21 and images must also be provided to Chris Laudani on a CD or flash drive by that date. This will allow us to plan the menu and prepare the slide shows.

Please get in touch with Chris or me if you have questions about the party or the program. We hope you will all be there.

Cindy Nothe (cnothe@comcast.net/413-478-0507)
Chris Laudani (chrislaudani789@comcast.net)

**SPRINGFIELD PHOTOGRAPHIC SOCIETY
RESERVATION FOR 2016-2017 HOLIDAY BANQUET**

Wednesday, December 28, 2016

Loomis Lakeside at Reed’s Landing
807 Wilbraham Rd, Springfield, MA 01109
Longfellow Room

Social hour starts at 6:00 p.m.
Dinner at 7:00 p.m.
Program - “My Favorite Images” at 8:00 p.m.

Name: _____

Number attending: _____

I will bring a dish (*specified below*): OR
Appetizer: _____
Main dish: _____
Dessert: _____

I am enclosing a contribution of: \$ _____
*Make checks payable to Springfield Photographic Society.
Cash contributions will be used to purchase
paper goods, beverages, and menu items as needed.*

I plan to show a collection of “My Favorite Images” Topic: _____

Mail to SPS Treasurer Cindy Nothe, P.O. Box 124, Monson, MA 01057.

Reservation deadline: December 21, 2016