

# EXPOSURES

Springfield Photographic Society

## Photo challenges

September: Music related

October: A reflection of yourself

November: Leaves

December: Photojournalism

January: Antique or junk

**February: Bokeh**

March: Portrait

April: On the streets

May: Motion

## Meet Eileen Donelan

We've been getting to know SPS members recently through member profiles in Exposures. This month we are featuring Eileen Donelan.

Turn to pages 2 and 3 to meet Eileen and see her favorite work.

## Equipment sale

Got any photo equipment to sell?

SPS is planning a sale for members at the Feb. 27 program night.

If you have anything to sell – lenses, cameras, bags, etc. – work up a list with your name, the products and prices and forward it to Jim Gillen ([gillenj@me.com](mailto:gillenj@me.com)) by Feb. 10. We'll send an email to all members so they can come to the meeting prepared with cash for purchases.

The event is planned as a fundraiser for the club so a contribution of 10% of the sale price is suggested for sellers. Any contribution would be welcome.

## Members share tips on gear, techniques

By JIM GILLEN

Several Springfield Photographic Society members took to the microphone Jan. 23 to explain their photo techniques and show gear they use to produce professional-quality photos for exhibition.

Kevin Fay began the session by encouraging everyone to shoot raw files and explaining how easy it is to edit them and then convert them to JPEGs.

Larry Sanchez and Joyce Doty tackled auto focus. Larry said on Nikon cameras there are three types: single for landscapes and portraits, and continuous and automatic for moving subjects. Other brands have similar functions.

Focusing with the shutter button or back-button focus were two options to be considered, Larry said. Many DSLRs allow a second button to be programmed for auto focus.

Al LaFleche showed a device called the Pluto trigger which provides the freedom to control a camera to perform many functions remotely. Among the functions is captured time lapses for star trails, light, sound and infrared sensors for shutter release, and Bluetooth connection for a cell phone.

Guenther Schubert delved into several subjects: Filters, depth of field, lenses and bokeh. Guenther said he uses lens protection filters on all his lenses, a

**(Continued on page 10)**



Joyce Doty shows how her sturdy tripod, ball head and gimbal stabilizer help her make better photos.

# SPS MEMBER PROFILE



Eileen photographs a wide range of subjects from landscapes like "Morning at Bryce National Park," left, and "Sunrise at Wonder Lake Denali," below, to macros of flowers on page 3.

## Eileen Donelan

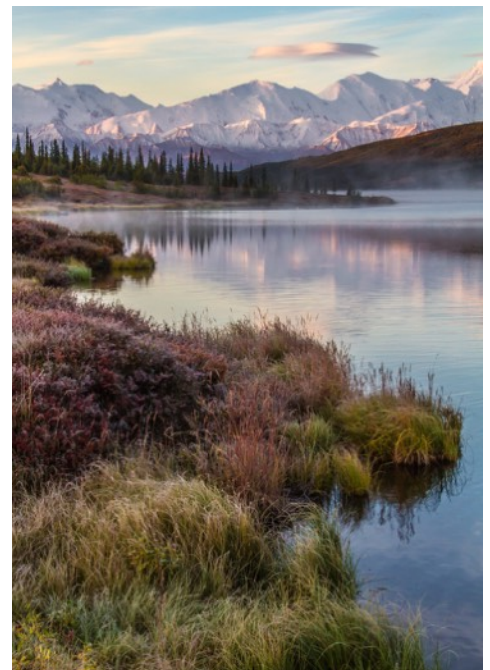
I was born and raised in Holyoke, born to first generation U.S. citizens whose parents immigrated from Poland. I was always drawn to the sciences and can remember as a child walking what seemed like a long way at that time to the store to redeem books of stamps for a microscope that wasn't very good but still was a lot of fun to use. That interest led me to a bachelor



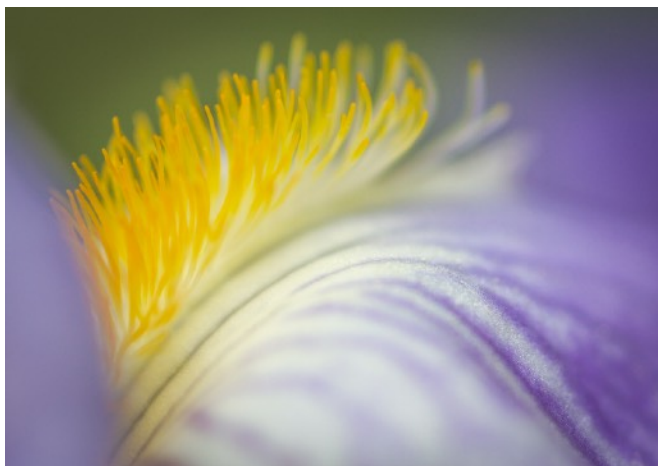
of science degree in medical technology from the University of Massachusetts in 1974. Later, I went on to get a master's in business from Western New England University.

My career started as a medical laboratory scientist in the blood bank in what was then Springfield Hospital. I retired in 2012 as the manager of transfusion medicine services for Baystate Medical Center, Baystate Franklin and Baystate Mary Lane. I had a very fulfilling career and feel very fortunate to have worked with so many talented and dedicated people.

Something that not many people know about me is that I have a serious interest in yoga. I have been studying with teachers since the 1980s and still regularly take classes. My studies have taken me to workshops in



**(Continued on page 3)**



Clockwise from top left, Eileen photographed "Iris," "Straw Flower," "Sunrise at St. Mary Lake Glacier NP," and "View of Paris from Notre Dame."

## **Eileen Donelan**

**(Continued from page 2)**

many states and even took me to Pune, India to study at the Iyengar Yoga Institute.

My interest in photography started in the 1970s but became more serious when I joined the Springfield Photographic Society in 2001.

Belonging to the club has given me the opportunity to learn from many skilled photographers and form friendships with people who share a common interest. Though I continue to like landscape, flower and travel photography, retirement has provided me the time to explore and challenge me in other areas. My goal is to bring an artistic flavor to my style and to continue to feel excitement when I pick up my camera.

My life would not be as rich as it is without my husband, Tim, whom I will be married to for 44 years. To be able to share my interest in photography with him has been very special. Together we have a wonderful son who lives in Wilton, N.Y., with his wife and two terrific grandchildren whose pictures seem to have crept into a number of club exhibitions.

# Print entries in the January exhibition

Clockwise from right, Rosemary Polletta captured "Rainbow Bridge National Monument," while Joyce Doty shot "Chairs for Viewing Autumn Trees," Rosemary also shot "Uh, I Think I'm Stuck," Kevin Fay caught "The Sleeping Irishman," and Gail Dinsmore captured "Nice Kitty."

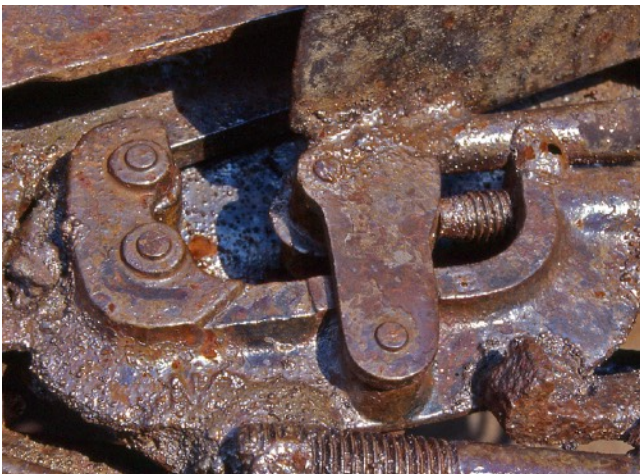
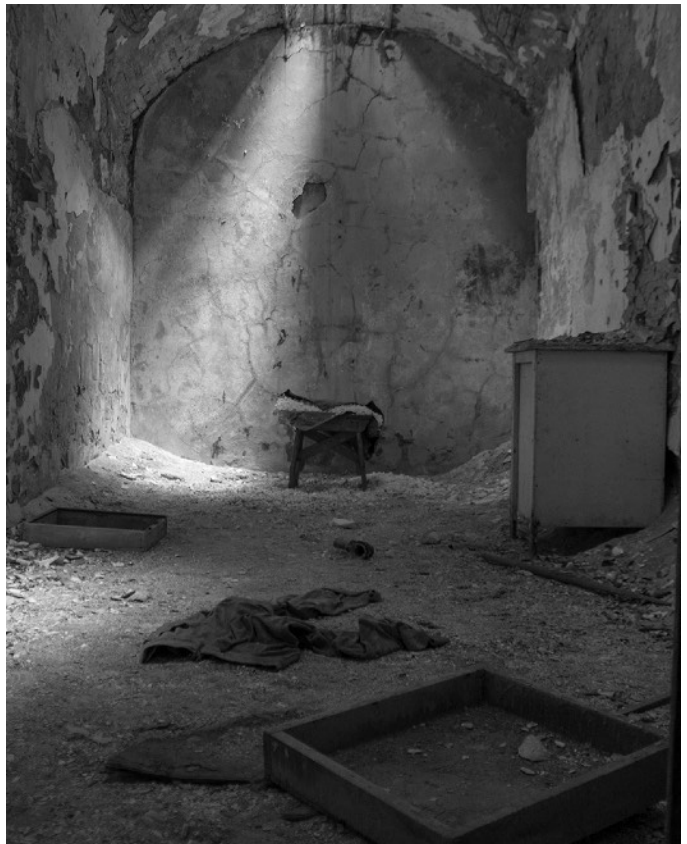


# Digital entries in the January exhibition

## Challenge entries: Antique or junk



Clockwise from left, "Precious Manuscript" by Amy Dane, "Penitentiary 1" by Gwen McNierney, "Junk Cutter" by Jim Theres and "Lunch Time" by Al LaFleche are among the entries in the Challenge category of Antique or Junk in the January exhibition.



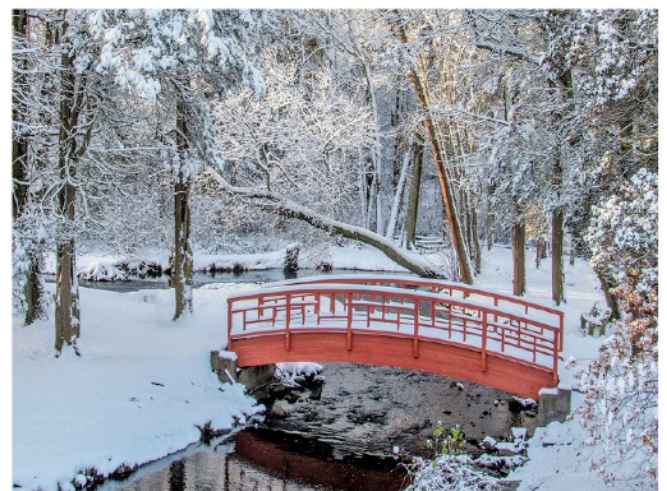
## Artistic and B&W entries



Clockwise from top, "Sideways Smoke" by Barbara Krawczyk, "Mark Stuart at Sun Studio" by Kevin Fay, "Sketching" by Muriel Lohnes and "Illusions 3" by Jim There are among the photographs displayed in the Artistic and Black & White categories in January.

## General and Nature entries

Clockwise from left, "Kayla and Maya" by Rachel Bellenoit, "Grimace" by Guenther Schubert, "Bridge over Troubled Waters" by Richard Harper, "BacHa Woman" by Tim Donelan, and "Well, Hello There" by Gwen McNierney stood out in the General and Nature categories in January.



## Members' showcase program

The Members' Showcase is planned for the Feb. 27 meeting. Submit a flash drive with your favorite photos in a slideshow format, with music if you wish, to Kevin Fay by the Feb. 13 meeting so he can install them on the club laptop and make sure all are running smoothly before the event.

# Exhibition results – Prints, projected images for January

**Judges: Amy Dane, Barbara Krawczyk, Karen Lemoine and Larry Sanchez**

## Digital

### Artistic

Barbara Krawczyk	Sideways Smoke	28	HA
Frank Rucki	Go Fly a Kite	26	HM
Jim Theres	Illusions 3	26	HM
Sylvia Pyzocha	Old Favorite	26	HM
Rachel Bellenoit	Three Ginko Leaves	26	HM
Judy Bolio	Tornado	26	HM
Joyce Doty	Floating (m)	25	
Kevin Fay	Creepy Cats	25	
Amy Dane	Fall Day in Mexico	25	
Richard Harper	Field of Dreams	25	
Tim Donelan	Frozen Leaf	24	
Al LaFleche	My God It's Full Of Stars	24	
Joyce Doty	Traveling Lines	24	
Muriel Lohnes	Wall Climber	24	
Jim Gillen	Fuzzy	22	
Eileen Donelan	Stream Water	22	

### Black and White

Sylvia Pyzocha	Low Tide	28	HA
Muriel Lohnes	Sketching	28	HA
Barbara Krawczyk	Making Sandals	27	HA
Kevin Fay	Mark Stuart at Sun Studio	27	HA
Eileen Donelan	Windmill on Cape	27	HA
Richard Harper	Don't Go Out in the Woods Tonight	26	HM
Judy Bolio	Tunnel Arch	26	HM
Tim Donelan	Waiting for Lunch	26	HM
Amy Dane	Exclusive Pigeon Post	25	
Dick Simmons	Lobster Shack	25	
Jim Gillen	Old Gears	25	
Joyce Doty	Marching in Step	24	
Gwen McNierney	Penitentiary 2	24	
Joyce Doty	Leaves (m)	23	
Rachel Bellenoit	Dead	22	

### Challenge

Joyce Doty	Mason's Patent Nov. 30th 1858	27	HA
Gwen McNierney	Penitentiary 1	27	HA
Amy Dane	Precious Manuscript	27	HA
Muriel Lohnes	1877 Family Bible	26	HM
Barbara Krawczyk	No Longer in Service	26	HM
Rosemary Polletta	Grazing in the Grass (Print)	26	HM
Denis Duquette	Slumping Sales Day (m)	25	
Marie Meder	Rusty Hammers	25	
Eileen Donelan	Shipwrecked	25	
Gail Dinsmore	Are These Antiques or Junk (Print)	25	
Kevin Fay	Junk Man	24	
Sylvia Pyzocha	Repurposed	24	
Jim Gillen	Rusted Out	24	
Charlie Strong	Eyes of the Beholder (Print)	24	
Frank Rucki	Antiques At Shelburne Falls	23	
Rachel Bellenoit	Grandma's Buttons	23	
Jim Theres	Junk Cutter	23	

Al LaFleche	Lunch Time	23	
Judy Bolio	Old Time Mining	23	
Tim Donelan	Once Someone's Favorite Chair	23	
Larry Sanchez	Junk Drawer	22	
Dave Taupier	Old Iron	22	

### General

Amy Dane	All Alone	28	HA
Tim Donelan	BacHa Woman	28	HA
Joyce Doty	I Got This! (m)	27	HA
Eileen Donelan	Bee on Aster	27	HA
Richard Harper	Bridge Over Troubled Waters	27	HA
Frank Rucki	Cardin at Rosecliff	27	HA
Barbara Krawczyk	Famous Faraglioni Rocks	27	HA
Larry Sanchez	Florida Sunrise	27	HA
Rachel Bellenoit	Kayla and Maya	27	HA
Denis Duquette	Resting Place (m)	26	HM
Sylvia Pyzocha	Bee Pollinating Corn	26	HM
Judy Bolio	Early Morning Light on Turret Arch	26	HM
Guenther Schubert	Grimace	26	HM
Gwen McNierney	Cape Cod in December	25	
Al LaFleche	Noontime Visitor	25	
Jim Theres	Take Your Pick	25	
Kevin Fay	Whiteface Mountain Panorama	25	
Marie Meder	Magnificent Mountains	24	
Dick Simmons	Marty	24	
Muriel Lohnes	Out of Business	24	
Jim Gillen	A Walk on the Beach	23	
Joyce Doty	Mr. Biggie	22	

### Nature

Gwen McNierney	Well, Hello There	30	HA
Barbara Krawczyk	Down the Hatch	27	HA
Tim Donelan	Fading Leaf	27	HA
Jim Theres	Quiet Time	27	HA
Guenther Schubert	Utah Landscape 2	27	HA
Jim Gillen	A Rabbit	26	HM
Kevin Fay	Adirondack Reflections	26	HM
Sylvia Pyzocha	Hooded Merganser Pair	26	HM
Rachel Bellenoit	Monarch on Clover	26	HM
Joyce Doty	Chipmunk (m)	25	
Eileen Donelan	Glacier Valley	25	
Joyce Doty	Spotted Touch-Me-Not	25	
Richard Harper	Waiting for Spring	25	
Amy Dane	Abyssinian Roller	24	
Muriel Lohnes	Cygnets	24	
Judy Bolio	Three Deer	23	
Al LaFleche	Empty Nest	22	

### Prints

#### Artistic

Kevin Fay	New View of Downtown Springfield (Print)	26	HM
Rosemary Polletta	Asian Influence (Print)	24	
Charlie Strong	Georgia-Florida Line Swamp Reflections (Print)	21	

#### Large Black & White

Joyce Doty	Soldier in Bunker (m)	30	HA
------------	-----------------------	----	----

(Continued on Page 9)

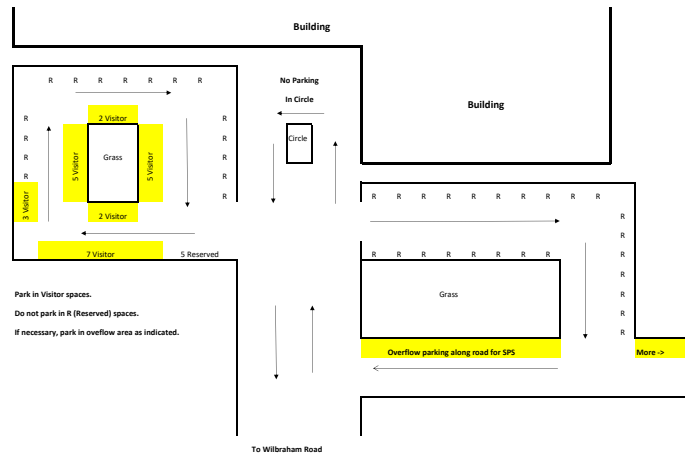


# Parking options for Loomis Lakeside at Reeds Landing

By KEVIN FAY

We have had one or two instances lately where a club member could not find a parking spot and just went home. This troubles me and I want to make sure that does not happen again. Our facility at Loomis is wonderful, but we do have parking challenges. Let me offer some ideas:

1. Familiarize yourself with the attached parking diagram that I just updated. There are now just 24 visitor spots.
2. Take note of the overflow area on the road to the right as you come in. If you cannot find a spot in the visitor area, follow the arrows and park along the “overflow” road. That area is about 200 steps from the front door, vs. about 100 from the visitor spots.
3. If you like to walk and would like to save a space for someone who does not, consider parking in the overflow area.



4. If that is too far for you, come early to increase your chance of getting a visitor spot.
5. If you would be stuck in the overflow area and cannot walk that far, park in the circle for a minute and find me. I will move your car if I am not busy or find someone who will. We do not want anyone going home.
6. If this is still an issue, maybe we could have someone who would take people from overflow to the front door at 6:50.
7. There is one other option. It is no shorter a walk, but there are 20 more visitor spots next to the Nursing Center (which I just discovered yesterday). To get to it, take a left on John Mann drive when coming in from the main Loomis access road. The visitor spots are just after the Nursing Center. There is a sidewalk just before the Nursing Center that leads to our building. It might be a better option than overflow if we get any snow.

## Exhibition results for January

(Continued from Page 8)

Rosemary Polletta	Moonset Over Lake Powell (m)	27	HA
Gail Dinsmore	Old Carousel Horse	27	HA
Charlie Strong	Jim Woodruff Hydro		
	Dam Georgia	24	
Joyce Doty	Soldiers in Truck 91101	24	
Rosemary Polletta	Towering Over Lower Emerald Pool	24	
<b>Large Color</b>			
Rosemary Polletta	Sunset at Balanced Rock (m)	28	HA
Kevin Fay	Autumn Run for Ware Central	28	HA
Joyce Doty	Chairs for Viewing		
	Autumn Trees	28	HA
Rosemary Polletta	Rainbow Bridge National Monument	28	HA
Joyce Doty	Starship Area 51 (m)	27	HA
Charlie Strong	Bird with Tapestry	25	
Gail Dinsmore	Nice Kitty	24	
<b>Small Black &amp; White</b>			
Kevin Fay	Waits River Vermont	27	HA
Rosemary Polletta	Delicate Curves	25	HM
Joyce Doty	Ladder for Artists Up High	25	HM
Joyce Doty	Back to the Bunker (m)	24	
Charlie Strong	Swamp	21	
<b>Small Color</b>			
Kevin Fay	The Sleeping Irishman	29	HA
Rosemary Polletta	“Uh, I Think I’m Stuck!”	26	HA
Gail Dinsmore	I Wonder	25	HM
Joyce Doty	Moon Over Cornfield	25	HM

## 2018-2019 SPS calendar

Date	Event	Details
Feb. 13	Exhibition	Bokeh
Feb. 20	Board meeting	
Feb. 27	Program	Members’ showcase
March 13	Exhibition	Portrait
March 20	Board meeting	
March 27	Program	Fred LeBlanc
April 10	Exhibition	On the streets
April 17	Board meeting	
April 24	Program	Mark Bowie
May 8	Exhibition	Motion
May 15	Board meeting	
May 22	Program	Year-end banquet

## SPS Officers and Directors

### Elected positions

President	Kevin Fay
Vice President (Prints)	Karen Lemoine
Vice President (Projected Images)	Larry Sanchez
Treasurer	Carol Reed
Secretary	Open
Directors	Tim Donelan, Joyce Doty, Denis Duquette, Jim Gillen, Dee Nacewicz, Guenther Schubert

### Appointed positions

Judge Coordinator/Exhibition Standards	Barb Krawczyk
Loomis Gallery Curator	Rosemary Polletta
Membership Chair	Carol Reed
Newsletter Editor	Jim Gillen
Social Media	Nick DeCondo
Statistician	Open
Trip Coordinator	Open
Website Manager	Charlie Strong

## Members share techniques

(Continued from page 1)

polarizing filter and two neutral density filters. The first protects the lens from the elements, the second eliminates glare from water and other surfaces and the NDs allow for a slower shutter speed. Guenther said depth of field is improved with smaller apertures and wide-angle lenses. He suggested three scenarios for choosing a lenses to carry on photo shoots, depending on need, weight and expense.

Guenther also explained bokeh, which is the aesthetic quality of out-of-focus light. This soft background should not distract from the main subject of the photo, he said.

## New SPS members on board

Sandra Taft-Fairlie of Feeding Hills and Megan Weiss of Wilbraham have joined the club, bringing Springfield Photographic Society membership to 74.

And we're looking for new members. Do you know anyone interested in photography? Why not invite him/her to the next meeting?

## EXPOSURES

Exposures is the monthly newsletter of the Springfield Photographic Society. SPS is affiliated with the Photographic Society of America and the New England Camera Club Council. Society meetings are held at Loomis Lakeside at Reed's Landing, 807 Wilbraham Road, Springfield, at 7 p.m. on the 2nd and 4th Wednesdays of each month, September through May. The SPS website is <https://springfield-ps.com>. President Kevin Fay can be reached at [kevin.fay44@gmail.com](mailto:kevin.fay44@gmail.com)



PHOTO & VIDEO  
**Hunt's** EST. 1889

HuntsPhoto.com

"Come visit your photo and video experts servicing Western Mass and beyond."

98 LOWER WESTFIELD ROAD HOLYOKE, MA 01040

Store Hours:

Monday-Friday: 9:00-8:00

Saturday: 9:00-7:00

Sunday: 12:00-5:00

STEVE BIDWELL | HOLYOKE (413) 585-9430



@ huntspfoto



@ huntsphtovideo



[www.youtube.com/user/HuntsPhotoandVideo](http://www.youtube.com/user/HuntsPhotoandVideo)

