

EXPOSURES

Springfield Photographic Society

Photo challenges

September: Still Life

October: Monuments

November: Emotion

December: Panorama

January: Trails

February: Collections

March: Barns

April: Funny/Humor

May: Dr. Seuss Sculpture Garden

Meet Tim Donelan

The work of Tim Donelan is featured this month in the Member Profile. He is the latest member we're getting to know better in Exposures. Turn to pages 2 and 3 to meet Tim.

We'd like you to participate as well. To do so, submit a short biography, a portrait and a selection of eight photos to Jim Gillen at gillenj@me.com. Size the photos as you would for the monthly exhibition.

New members on board

Carol Reed reports two new SPS members – Helen Gannon of Springfield and Susan Sanchez of Feeding Hills. Susan is married to club Vice President Larry Sanchez. Membership is at 83.

Also visiting at the last meeting were Charlie and Eileen Hatton who stop by when not in Florida.

Fall's a great time for field trips

By KEVIN FAY

As we head into October, we move into the most colorful time of year in New England and I hope that everyone is thinking about photo opportunities. I was in the Berkshires last weekend and saw the beginning of the fall foliage season. And it is only going to be more vibrant as October unfolds. Not only does the month provide great colors and beautiful skies, but it is also much easier to catch sunrise and sunset with much shorter days than it is in summer. I believe October has some of the latest sunrises we will see all year, so this is a great time to get to those places that you have been thinking about through the lazy, hazy days of summer. Here are some related thoughts:



We need people to step up and lead some field trips. It can be near or far, but the most important thing is to target one place that you want to go this month, set a date, and send an invite to the club. If you have led trips before and know the ropes, please go for it. If you have not or want some help with putting

something together, just give me a call. If you want to discuss ideas, let me know. This is one area that I think we could do better as a club, so we need a few people to take the lead.

I would like to lead a trip to a place that I scouted today – the Old Rhinebeck Aerodrome in Red Hook, N.Y. The trip will be on Sunday, Oct. 13. Rhinebeck is best known for the collection of World War I bi-planes on exhibit in weekend airshows. The planes are on display before the show, and for the daring souls, you can go up in one of them for a 15-minute ride. On Oct. 13, the program is the Pumpkin Bombing/Fall Festival & WWI Air Show.

Rhinebeck is about two hours away and will include a nice drive out through the Hudson River Valley. Admission to the airfield is \$25 for adults and \$20 for seniors (this includes the air show). We will be gone for the day and can depart as early as the group chooses to do further photography along the way. This is going to be a fun trip! If you are interested, please let me know.

I will also be leading a bigger trip to New Mexico in January. This will have two parts: three days at the Bosque del Apache Wildlife Reserve

(Continued on page 11)

SPS MEMBER PROFILE

Tim Donelan



I was born in Boston and raised in Plymouth, America's hometown, just a few blocks from the Plymouth Rock. I come from a large Irish Catholic family with three brothers and three sisters. I am the middle child. My father was a



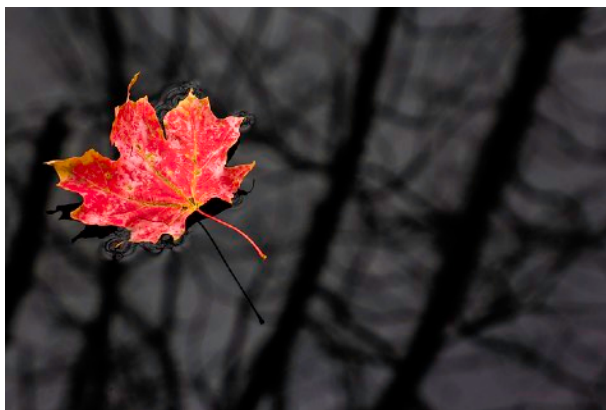
commercial artist working in advertising. He also painted and drew cartoons. My older brother is also an artist and cartoonist. I wasn't blessed with the talent they have. My mother was a fourth-grade teacher.

I got my first camera for my 10th birthday, a Brownie StarMite. I took pictures of my family, friends and little green army men in combat. In high school I was photo editor and photographer for my senior yearbook.

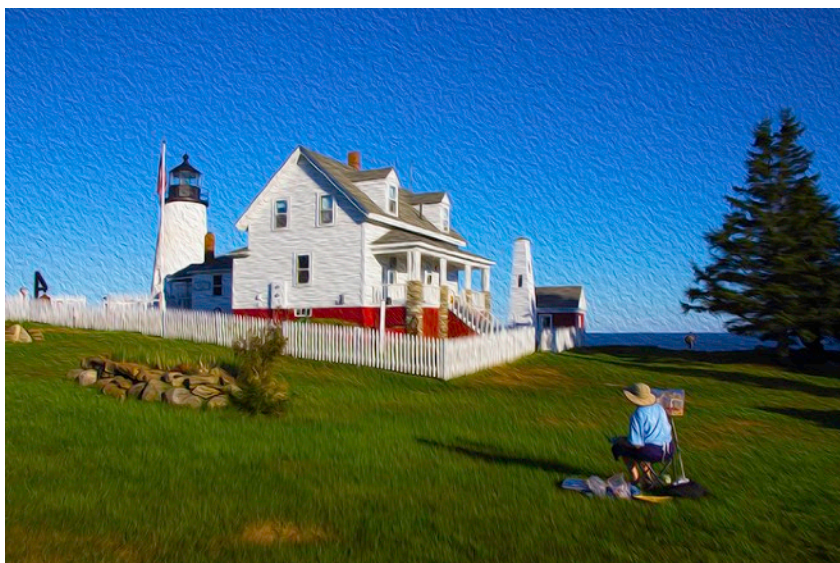
I attended the University of Massachusetts where I met Eileen and graduated with a degree in American history and education. I worked a variety of job for a few years, book department manager, record store clerk, substitute teacher and railroad laborer. Finally, I found my career and worked an applications systems analyst at Smith College for 32 years.

I always had a camera taking mostly taking pictures of family and vacations. I didn't consider myself a photographer until I joined the Springfield Photographic Society in 2001. Actually, it wasn't until I was in the club for a few years before I thought of

(Continued on page 3)



Among Tim's favorites are, from above, "Docked Boats," "Red Leaf" and "Light House Artist."





Tim Donelan

(Continued from page 2)

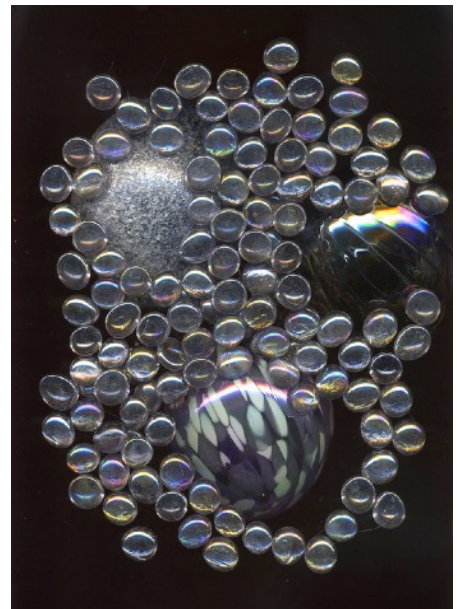
myself as a photographer. Seeing the work of experienced, good photographers learning from the members, going on trips with them really had a huge impact on my images. I don't specialize in a type of photography. I do shoot a lot of travel photography and landscapes. Basically, I shoot whatever is available at the time, sport, music, people, buildings and abstracts.

Of course, sharing our interest with photography with Eileen is wonderful. Although getting a better image than she when we go someplace for a shoot is challenging.

Beside photography I read a lot – history, non-fiction, sci-fi, fantasy, mysteries – pretty much anything. I play golf often and not well. Of course, we love spending time with our son, daughter-in-law and our cute and super fun grandchildren.



"Bosque Del Apache," clockwise from top, "Glass," "My Back Yard" and "Pure Joy" demonstrate the variety of Tim's skills.



Exhibition results – Prints, projected images for September

Judges: Nancy Bryant, Amy Dane, Eileen Donelan and Barbara Krawczyk

Digital

Artistic

| | | | |
|------------------|---|----|----|
| Barbara Krawczyk | Gone with the Wind | 29 | HA |
| Darlene Anderson | Steel Wool Photography | 28 | HA |
| Jim Theres | 3 Glasses | 27 | HA |
| Rachel Bellenoit | Fiddlehead Fronds | 27 | HA |
| Amy Dane | Freaky Bird Grabs Freaked-out Butterfly | 27 | HA |
| Gwen McNierney | Autumn Begins | 24 | |
| Eileen Donelan | Flower Bud | 24 | |
| Al LaFleche | Midsummer Sunset | 24 | |
| Judy Bolio | Old Time Dahlia | 24 | |
| Sylvia Pyzocha | Peggy's Cove | 24 | |
| Kevin Fay | McWay Falls | 23 | |
| Karen Lemoine | Rainbow Girl | 23 | |
| Richard Harper | Rose and Reflection | 23 | |
| Tim Donelan | Stowe Church Landscape | 23 | |
| Jim Gillen | The Vessel | 23 | |
| Muriel Lohnes | Sand Dunes | 22 | |

Black and White

| | | | |
|------------------|------------------------------|----|----|
| Rachel Bellenoit | The Journey | 28 | HA |
| Barbara Krawczyk | Before the Fire | 26 | HM |
| Darlene Anderson | Brooklyn Bridge | 26 | HM |
| Karen Lemoine | I Wonder | 25 | |
| Judy Bolio | Lupine | 25 | |
| Sylvia Pyzocha | Water Lily Bloom | 25 | |
| Eileen Donelan | Lily in Black and White | 24 | |
| Amy Dane | Peace Bridge, Tiblisi | 24 | |
| Richard Harper | Tin Smithy at Sturbridge | 24 | |
| Kevin Fay | Chugging Through the S Curve | 23 | |
| Al LaFleche | German Reenactor | 23 | |
| Jim Gillen | Alone on the Beach | 22 | |
| Tim Donelan | Tree Face | 22 | |
| Muriel Lohnes | Old House on the Dunes | 21 | |

Challenge

| | | | |
|-------------------|--------------------------------------|----|----|
| Sylvia Pyzocha | Grapes and Apples* | 28 | HA |
| Judy Bolio | Spring Flowers | 28 | HA |
| Rosemary Polletta | Summer Blooms In Glass Vase (Print)* | 28 | HA |
| Karen Lemoine | Peonies in a White Pitcher* | 26 | HM |
| Jim Gillen | Red Grapes, Red Wine | 26 | HM |
| Darlene Anderson | Fall Still Life | 25 | |
| Barbara Krawczyk | Lilacs in a Cup | 25 | |
| Richard Harper | My Dad | 25 | |
| Larry Sanchez | Spain Life | 25 | |
| Jim Theres | Days Gone By | 24 | |
| Dave Taupier | Food and Enlightenment | 24 | |
| Eileen Donelan | Marquette 2017 | 24 | |
| Rachel Bellenoit | Old World Still Life | 24 | |
| Kevin Fay | Shelburne Winery Still Life | 24 | |
| Amy Dane | The Kitchen | 24 | |
| Tim Donelan | Vintage Cameras | 24 | |

| | | | |
|-------------------------|--------------------------|----|--|
| Gail Dinsmore | Adirondack Rustic | 23 | |
| Gwen McNierney | The Key to Possibilities | 23 | |
| Marie Meder | On Thin Ice | 22 | |
| Stephan Platzer | Wine and Bread | 21 | |
| * Secret Judges Choices | | | |

General

| | | | |
|------------------|--------------------------------|----|----|
| Kevin Fay | Billings Farm Corral | 27 | HA |
| Larry Sanchez | Garlic | 27 | HA |
| Eileen Donelan | Fishing by Net Tossing | 26 | HM |
| Frank Rucki | Garden Shack | 26 | HM |
| Gwen McNierney | High Meadows Fun | 26 | HM |
| Barbara Krawczyk | Italian Cigarette-Smoking Man | 26 | HM |
| Darlene Anderson | National September 11 Memorial | 26 | HM |
| Tim Donelan | When the Cows Home | 26 | HM |
| Rachel Bellenoit | Bloodroot | 25 | |
| Jim Theres | Kate | 25 | |
| Judy Bolio | Lupine Field | 25 | |
| Marie Meder | Organic Harvest | 25 | |
| Sylvia Pyzocha | Rainbow Over Brimfield | 25 | |
| Amy Dane | The Good Life | 25 | |
| Al LaFleche | 240Z | 24 | |
| Richard Harper | Farming at Sturbridge, MA | 24 | |
| Stephan Platzer | Stebbins | 24 | |
| Jim Gillen | Working the Farm | 24 | |
| Muriel Lohnes | Monarch Butterfly Caterpillar | 22 | |
| Karen Lemoine | Wooden Bowl | 22 | |
| Nature | | | |
| Judy Bolio | After the Rain | 28 | HA |
| Jim Gillen | Forked Tongue | 27 | HA |
| Kevin Fay | Little Blue Heron | 27 | HA |
| Rachel Bellenoit | Four Different Points of View | 26 | HM |
| Sylvia Pyzocha | Heron Snatches Bluegill | 26 | HM |
| Barbara Krawczyk | Spring Pollinator | 26 | HM |
| Karen Lemoine | Colorado River Trail | 25 | |
| Amy Dane | Crabby Face | 25 | |
| Larry Sanchez | Eastern Bluebird | 25 | |
| Muriel Lohnes | Butterfly | 24 | |
| Richard Harper | Changing Locations | 24 | |
| Eileen Donelan | Down the Hatch | 24 | |
| Al LaFleche | Hungry Caterpillar | 24 | |
| Marie Meder | In Full Bloom | 24 | |
| Gwen McNierney | Lunchtime | 24 | |
| Darlene Anderson | Mt. Kearsarge, NH | 24 | |
| Tim Donelan | One Tree | 24 | |
| Gail Dinsmore | Early Spring Serenity | 23 | |
| Jim Theres | Tree Hugger | 23 | |
| Stephan Platzer | Blue Jay Nestlings | 22 | |

Prints

Artistic

| | | | |
|-------------------|---------------|----|----|
| Rosemary Polletta | Meadow Dreams | 26 | HM |
|-------------------|---------------|----|----|

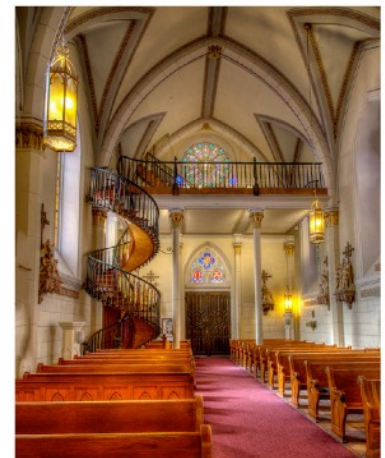
Large Black & White

| | | | |
|-------------------|------------------------|----|--|
| Rosemary Polletta | Dramatic Imperfections | 25 | |
|-------------------|------------------------|----|--|

(Continued on Page 14)



Top-scoring prints from September exhibition



Among the eye-catchers in prints were, clockwise from top, "Meadow Dreams" by Rosemary Polletta, "Color Coordinated" by Gail Dinsmore, "Loretto Chapel" by Kevin Fay, and "Sturbridge Blacksmith" also by Gail Dinsmore.

Digital results from September exhibition



Artistic

Some dazzling and subtle colors in the Artistic category in September: "Steel Wool Photography" by Darlene Anderson, above, "Fiddlehead Fronds" by Rachel Bellenoit, right, and "Freaky Bird Grabs Freaked-Out Butterfly" by Amy Dane, below.





Black & White

Black & white entries included, clockwise from above left, "I Wonder" by Karen Lemoine, "Before the Fire" by Barbara Krawczyk, "The Journey" by Rachel Bellenoit, and "Lupine" by Judy Bolio.



Challenge: Still Life

Still Life was the topic for September's challenge. It was met by Sylvia Pyzocha with "Grapes and Apples," clockwise from right, Karen Lemoine with "Peonies in a White Pitcher," Judy Bolio with "Spring Flowers," Rosemary Polletta with "Summer Blooms in Glass Vase," and Jim Gillen with "Red Grapes, Red Wine."



General

Darlene Anderson made a poignant photo of a flower in "National September 11 Memorial," clockwise from left, Larry Sanchez photographed a barn packed with "Garlic," Kevin Fay composed "Billings Farm Corral," Gwen McNerney found "High Meadows Fun," Frank Rucki displayed "Garden Shack," and Eileen Donelan captured "Fishing by Net Tossing."



Nature



Judy Bolio captured streaking sunlight in the woods in "After the Rain," clockwise from the top, while Rachel Bellenoit caught turtles and their reflections in "Four Different Points of View," Jim Gillen snared a garter snake in "Forked Tongue," and Sylvia Pyzocha found a heron snacking in "Heron Snatches Bluegill."



Carol Reed stands in the room which housed most of the photos in the club’s agriculture exhibit at the Stroh Building at the Big E last month. More than a dozen club members worked together to assemble the exhibit’s photos. (Kevin Fay photo)

Fall’s a great time for field trips

(Continued from page 1)

in San Antonio, NM, and two or three days in the beautiful town of Santa Fe.

Bosque del Apache is a major winter destination for migrating birds and last year had about 12,000 sandhill cranes and over 30,000 snow geese. (See Tim Donelan’s photo on page 3.) I have been to Bosque and Santa Fe this past year and have lots of ideas on photo

ops. I found that flights were reasonable and that hotels and rental cars were downright cheap. Sharing rooms and cars will make this one of the least expensive big trips that you might be able to do.

The trip (tentatively) would be from Jan. 14 to 21. Flights on American Airlines are in the area of \$318 to \$388 round trip. If you are interested in this trip, let me know. Then let’s lock in the dates and work on reservations. This one is going to be great. Hope you can make it!

Contact me at kevin.fay44@gmail.com or 413-531-5483.

2019-2020 SPS calendar

| Date | Event | Details | | | |
|---------|-----------------|-----------|----------|------------------|----------------------------|
| Oct. 9 | Exhibition | Monuments | Feb. 12 | Exhibition | Collections |
| Oct. 16 | Board meeting | | Feb. 19 | Board meeting | |
| Oct. 23 | Program | Workshop | Feb. 26 | Program | Members’ showcase |
| Nov. 6 | Board meeting | | March 11 | Exhibition | Barns |
| Nov. 13 | Exhibition | Emotions | March 18 | Board meeting | |
| Nov. 20 | Program | TBA | March 25 | Program | TBA |
| Dec. 4 | Board meeting | | April 8 | Exhibition | Funny/humor |
| Dec. 11 | Exhibition | Panorama | April 15 | Board meeting | |
| Dec. 18 | Holiday banquet | | April 22 | Program | TBA |
| Jan. 8 | Exhibition | Trails | May 13 | Exhibition | Dr. Seuss Sculpture Garden |
| Jan. 15 | Board meeting | | May 20 | Board meeting | |
| Jan. 22 | Program | TBA | May 27 | Year-end banquet | |

**SPRINGFIELD PHOTOGRAPHIC SOCIETY
APPLICATION FOR MEMBERSHIP 2019-2020**
83rd Year

NAME _____

SPOUSE/PARTNER 1st NAME _____

FAMILY NAMES (family membership) _____

ADDRESS _____

CITY, STATE, ZIP _____

PHONE (home) _____ (cell) _____

EMAIL _____

Membership Fees

- Individual \$35.00*
- Family \$50.00*
- High School Student Free*
(Copy of student ID required)

NEW MEMBER RENEWAL

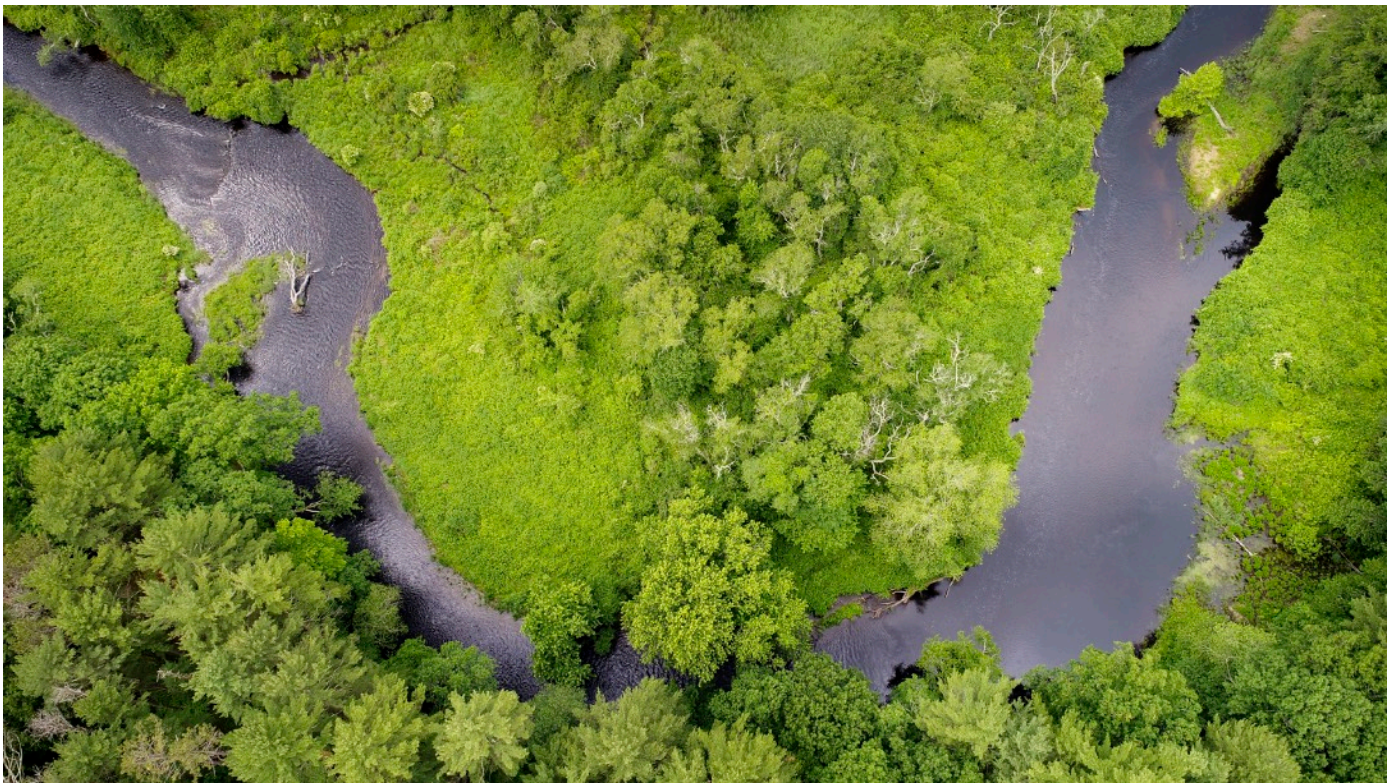
PSA MEMBER? Yes No

Springfield Photographic Society Field Trip Release Form

I (we), the undersigned, understand that the Springfield Photographic Society requires participants to share responsibility for their own safety and the safety of others during field trips. We hereby acknowledge that as participants in field trips we may be exposed to risks, including but not limited to, vehicular travel over land and water, foot travel over difficult terrain, and unexpected weather conditions. We may also encounter hazardous plants, wildlife, and/or insects. In the event of injury, we understand that we may face delays in reaching professional medical help. We fully accept these risks and agree to hold the Springfield Photographic Society, its officers, directors, volunteers, and agents free from any and all liability for injuries and/or loss which we may incur, directly or indirectly, while on a trip.

| <i>Signature</i> | <i>Printed Name</i> | <i>In Case of Emergency (Provide a name and phone number)</i> |
|------------------|---------------------|---|
| | | |
| | | |
| | | |

Please make your check payable to **Springfield Photographic Society**
Mail to SPS Treasurer **Carol Reed, 395 Porter Lake Dr. #306, Longmeadow, MA 01106**
(or bring them to the next meeting)



Stephen G. Smith's work includes "Willimantic River," above. (Steven G Smith ©)



Parking in the main parking lot at Loomis can be tight. The Nursing Center lot is an option. After you turn onto the main driveway for Loomis, turn left at John Mann Drive to the lot. Follow the sidewalk (arrows) around the building.

Pulitzer winner outlines ways to obtain better photos

By **JIM GILLEN**

Pulitzer Prize-winning photojournalist Stephen G. Smith discussed a range of topics at the Sept. 25 meeting of the club.

Smith, also an associate professor of visual journalism at the University of Connecticut, earned the Pulitzer while covering the wildfires with other staff photographers at the Rocky Mountain News in Colorado. He said his contribution of a firefighter walking away from a blaze has received a lot of attention internationally.

Smith's presentation opened with a slide show of photos drawn from his book, "Under the Dark Sky: Life in the Thames River Basin," which chronicles the picturesque basin which extends from southern Massachusetts to Long Island Sound. Smith, who grew up near Mt. Ranier in Washington state, said he spent three years researching

(Continued on page 14)

Pulitzer winner outlines methods to shoot better photographs

(Continued from page 13)

and shooting for the book which is available on Amazon. He said he often visited sites a half dozen times to learn the best light and perspective for a photo.

He said he is “at home with nature” and through his work hopes to protect and preserve it. He said he is “constantly humbled” by moments in nature.

Speaking of technique and equipment, Smith said he uses a variety of camera brands, but lately relies on Canon gear. However, he said a photographer can get solid results from just about any camera if the brain is employed to get the best shot.

Some tips: Be aware of swift changes in technology, don’t be afraid to shoot abstractions such as a dragonfly wing, use people in photos to bring in scale and humanity, employ daylight rather than automatic white balance for better results, and make use of the histogram on the camera to improve exposure. For a look at Smith’s work, check out

www.stevensmith.com,
[instagram@stevensmith_pictures](https://www.instagram.com/stevensmith_pictures) and https://www.instagram.com/stevensmith_pictures/?hl=en

September exhibition results

(Continued from Page 4)

| | | | |
|--------------------------------|---------------------------|----|----|
| Gail Dinsmore | Mountain Man | 24 | |
| Large Color | | | |
| Rosemary Polletta | Botanical 1 | 30 | HA |
| Gail Dinsmore | Sturbridge Blacksmith | 28 | HA |
| Eileen Donelan | Sunrise at the Lodge | 28 | HA |
| Kevin Fay | Great Sand Dunes | 25 | |
| Small Black & White | | | |
| Kevin Fay | Old Truck San Antonio, NM | 24 | |
| Rosemary Polletta | Tomatoes in Black & White | 21 | |
| Small Color | | | |
| Kevin Fay | Loretto Chapel | 29 | HA |
| Gail Dinsmore | Color Coordinated | 26 | HA |

SPS Officers and Directors

Elected positions

| | |
|-----------------------------------|--|
| President | Kevin Fay |
| Vice President (Prints) | Karen Lemoine |
| Vice President (Projected Images) | Larry Sanchez |
| Treasurer | Carol Reed |
| Secretary | Carol Reed |
| Directors | Tim Donelan, Joyce Doty, Denis Duquette, Jim Gillen, Dee Nacewicz, Guenther Schubert |

Appointed positions

| | |
|--|-------------------|
| Judge Coordinator/Exhibition Standards | Barbara Krawczyk |
| Loomis Gallery Curator | Rosemary Polletta |
| Membership Chair | Carol Reed |
| NECCC Representative | Richard Harper |
| Newsletter Editor | Jim Gillen |
| Social Media | Nick DeCondio |
| Trip Coordinator | Open |
| Website Manager | Charlie Strong |

EXPOSURES

Exposures is the monthly newsletter of the Springfield Photographic Society. SPS is affiliated with the Photographic Society of America and the New England Camera Club Council. Society meetings are held at Loomis Lakeside at Reed’s Landing, 807 Wilbraham Road, Springfield, at 7 p.m. on the 2nd and 4th Wednesdays of each month, September through May. The SPS website is <https://springfield-ps.com>. President Kevin Fay can be reached at kevin.fay44@gmail.com



Member