

EXPOSURES

Springfield Photographic Society

Photo challenges

September: Negative space

October: Neon

November: Geometric shapes

December: Street photography

January: Trees/Forests/Woods

February: Up in the Air

March: Something Tiny

April: Curves

May: Traffic

Meet Steve Goldstein

Steve Goldstein, who along with Guenther Schubert, is one of two new members of the club's Hall of Fame. Turn to pages 2 and 3 for a look at his Member Profile including a biography and images.

Calendar

March 2 – Digital images due to Larry Sanchez

March 9 – Digital exhibition

March 23 – Sean Crane discusses nature photography

February exhibition

Results of the February exhibition begin on page 4 with the list followed with a sampling of the best images on pages 6-18.

SPS launches Hall of Fame, names Goldstein, Schubert

By KEVIN FAY

We are pleased to announce the establishment of the SPS Hall of Fame and the election of two current club members: Steve Goldstein and Guenther Schubert.

The goal of the Hall of Fame is to recognize members of our club who have made significant contributions to the SPS over a long period of time. Those contributions could be ones involving artistic photographic contributions, as well as board service, where members have given a significant amount of time to projects and ongoing responsibilities that has made the club as successful as it is today. While the club has been fortunate to have a great number of people who have made contributions in one way or another, the Hall of Fame will include those people whose work and dedication to the club has been truly exceptional.

The inaugural class of honorees will include some of our longest time members: Harry Ahern, Les Campbell, Ken Cook, Paul Deegan, Rich Novak, Dick Simmons and Jim Theres. These are the people who led our club when many of us joined, and we have all benefited over the years from their talent and dedication. Our board of directors has recently approved this program and our intent is to continue the election of new members at the rate of perhaps two per year. As mentioned above, Steve Goldstein and Guenther Schubert have also been elected. So, the Hall of Fame will begin with these nine members.

The Hall of Fame will be an addition to the SPS web site. The web pages are currently in development and will include a lead page listing the members and the year elected. A click on any name will bring you to a page dedicated to that honoree, where we intend to have their picture and a write up about their service to the club. Also, there will be another link on that page for Member's Gallery which will take you to a sample of the great work we have seen from that person. In the coming weeks, we will be working with the members or their families to obtain all that we need for the web pages. When the Hall of Fame pages are complete, we will have another announcement. In the meantime, we wanted to let you all know about the development of the SPS Hall of Fame. See page 2 for Steve's profile.

SPS MEMBER PROFILE

Steve Goldstein

Steve Goldstein, a 27-year member of the Springfield Photographic Society, got his start with photography in 1980 when he traveled to Europe and recorded his experiences with a Kodak Instamatic.



Steve, along with Guenther Schubert, is joining the club's Hall of Fame this month.

"I never really had an interest in photography until I started international travel," he said. "Once I started taking pictures of beautiful places, I kinda got hooked on (photography)." He began going abroad in 1980 and continued every year thereafter.

After purchasing a single lens reflex camera in 1984, he recorded many more travels, from Europe to India, China, Australia, New Zealand, Nepal, Bali and Hawaii, among others.

Steve describes himself as primarily a landscape photographer although in recent years he has branched out to include wildlife and bird images. Birding, he said, is very challenging and requires a lot of practice.

(Continued on page 3)



Among Steve Goldstein's favorite photos are, from top, "Nubble Light and Moon," "Million Dollar Highway" and "Coy Dog Attack."



Steve Goldstein

(Continued from page 2)

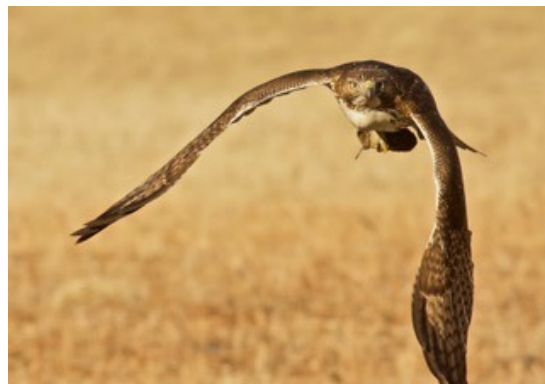
In 1989, a friend persuaded him to join the Westfield Camera Club. He said he had no clue as to what a good photo was when he joined. "It was a real awakening for me," he said.

Steve joined SPS in 1995 and continued to learn more about his hobby. He had been traveling out west every fall until Covid hit. Now he limits his travel to autumn visits to Maine and Vermont.

For many years, Steve attended the NECCC summer conference. He said he was saddened to learn that this year's 75th gathering at the University of Massachusetts will be the last.

A self-described nature lover, Steve has affiliations with the Sierra Club, the National Audubon Society, the World Wildlife Fund and Nature Conservancy.

Steve grew up in the East Forest Park section of Springfield, attended Classical High School and earned a degree in business at Curry College.



From top, "Serving Lunch," "Harrier with Prey" and "Crested Butte Rainbow."



Exhibition results for February print, digital entries

Print Judges: Darlene Anderson, Barbara Krawczyk, Joe Kruzal and Larry Sanchez

Prints

Artistic

Eileen Donelan	Painted Lotus	30	HA
Eileen Donelan	The Stare	29	HA
Rosemary Polletta	Two Pears	29	HA
Rosemary Polletta	Forest Park in the Snow	29	HA
Kevin Fay	Honakaa Tea Shop	27	HA

Large Black & White

Rosemary Polletta	Early Frost on Hydrangeas	27	HA
Rosemary Polletta	Goldmine Brook Falls	27	HA
Eileen Donelan	Antelope Canyon Swirls	24	

Large Color

Rosemary Polletta	Wrapped in Elegance	30	HA
Rosemary Polletta	Bryce Canyon Lit Up	29	HA
Rachel Bellenoit	Roosting Great Egrets	29	HA
Kevin Fay	Richmond Round Church	27	HA
Eileen Donelan	Upper Ammonoosuc Falls	27	HA
Kevin Fay	Above Falmouth Harbor	27	HA
Eileen Donelan	Sunflowers and Sugarloaf	24	
Dee Nacewicz	Foley's Barn	23	
Dee Nacewicz	Kauai North Coast	23	

Small Black & White

Rosemary Polletta	Ring of Flowers	29	HA
Kevin Fay	View From the Edge	29	HA
Kevin Fay	Derry Row Houses	27	HA
Dee Nacewicz	Old Master	24	
Dee Nacewicz	Tangled	24	
Rosemary Polletta	Textures & Shadows	24	

Small Color

Kevin Fay	Posing Puffin	28	HA
Rachel Bellenoit	Solo Sandhill Crane	25	HM
Dee Nacewicz	Red Red Rose	24	
Dee Nacewicz	Kauai Waterfall2	24	

Digital Judges: Kevin Fay, Barbara Krawczyk, Joe Kruzal and Rosemary Polletta

Digital

Artistic

Pattie Freeman	Family Tree	29	HA
Jim Feroli	Flying to the Stars	28	HA
Richard Harper	From Garden Delight	28	HA
Barbara Krawczyk	Red Tulips	28	HA
Dave Roback	Bodie Lighthouse	27	HA
Amy Dane	Faded Glory	27	HA
Eileen Doherty	Dressed for the Party	26	HM
Judy Bolio	Jenny Farm	26	HM
Kevin Fay	Manhattan Reflection 2	26	HM
Eileen Donelan	The Orange Tree	25	

Steve Greenberg	Tangerine Dream	25	
Darlene Anderson	Fripled Flower	24	
Frank Rucki	Lost In Space	24	
Tim Donelan	Metallic Dunes	24	
Rachel Bellenoit	Teamwork	24	
Al LaFleche	1430	22	

Black and White

Gwen McNierney	Exploring the Fountain	29	HA
Tim Donelan	The Fiddler	29	HA
Rachel Bellenoit	Bird in Hand	28	HA
Guenther Schubert	Escape the Heat	28	HA
Eileen Doherty	Sad Sady	28	HA
Jim Feroli	Boot Scootin' Boogie	27	HA
Kevin Fay	Old Railroad Yard	27	HA
Al LaFleche	The Ace	27	HA
Richard Harper	The Innocence of Youth	27	HA
Amy Dane	Waiting for Clients	27	HA
Jim Gillen	Criss Cross	26	HM
Dave Roback	Window Light	26	HM
Barbara Krawczyk	In the Shadow	25	
Frank Rucki	Inn at Castle Hill	25	
Steve Greenberg	Men in a Balloon	25	
Joe Kruzal	Olympic Range	25	
Eileen Donelan	Quabbin at Sunrise	25	
Darlene Anderson	Soaking Up the Sun	25	
Pattie Freeman	Wait, I See a Squirrel	25	
Judy Bolio	Lichen	24	

Challenge

Pattie Freeman	Hunting for Lunch	30	HA
Dave Roback	On the Toe	29	HA
Jim Gillen	Celestial Flower	28	HA
Joe Kruzal	Side by Side	28	HA
Jim Feroli	Who Hung the Moon?	28	HA
Eileen Donelan	Kite and Gull	27	HA
Rosemary Polletta	May Flower Moon	27	HA
Frank Rucki	When Cats Could Fly	27	HA
Darlene Anderson	Falling from the Sky	26	HM
Richard Harper	Kestrel on the Wing	26	HM
Steve Greenberg	Up in the Air	26	HM
Gwen McNierney	Updog Challenge	26	HM
Amy Dane	All American Girl	25	
Barbara Krawczyk	Into the Wild Blue Yonder	25	
Kevin Fay	Rollercoaster	25	
Al LaFleche	Albatross DVa	24	
Larry Sanchez	Fireworks	24	
Rachel Bellenoit	Flight of the Egrets	24	
Dave Taupier	Knight of the Air	24	
Tim Donelan	Parasailing	24	
Walt Lawrence	Stirring the Hornets Nest	24	
Linda Cardillo Platzer	View from the Needle	23	
Marie Meder	Up, Up and Away	22	

(Continued on page 5)

Exhibition results for February print, digital entries

(Continued from page 4)

Stephan Platzer	Taking Off	21	Al LaFleche	Catching the Red Eye	23
			Eileen Donelan	Mighty Mum	23
General			Nature		
Eileen Doherty	She's In Charge	29 HA	Darlene Anderson	Get My Good Side	28 HA
Dave Roback	Everybody Has a Camera	28 HA	Jim Feroli	Gliding Flight	28 HA
Richard Harper	Future Olympians	28 HA	Pattie Freeman	On Golden Pond	28 HA
Joe Kruzal	The Guardian	28 HA	Richard Harper	Winter Waterfall	28 HA
Darlene Anderson	Warm Cup of Sunshine	28 HA	Eileen Doherty	Balancing	27 HA
Larry Sanchez	Cape Crescent Moon	27 HA	Rachel Bellenoit	Mallard Drake	27 HA
Kevin Fay	Haleakala Crater	27 HA	Barbara Krawczyk	Tricolor Profile	27 HA
Jim Gillen	Hiking Dingle	27 HA	Kevin Fay	Looking for Oysters	26 HM
Jim Feroli	The Perfect Fishing Spot	27 HA	Eileen Donelan	Oystercatcher on Nest	26 HM
Amy Dane	Drummer's Breakfast Break	26 HM	Gwen McNierney	Beauty on a Walk	25
Barbara Krawczyk	Napatree Point Sunset	26 HM	Judy Bolio	Fluffing Feathers	25
Rachel Bellenoit	The Old Mare	26 HM	Walt Lawrence	Old Blue	25
Judy Bolio	Blue Ribbon Winners	25	Rachel Bellenoit	Quabbin Red-tailed Hawk	25
Pattie Freeman	Focus on the Curve	25	Jim Gillen	Sun-dappled	25
Frank Rucki	Ivy on Fence	25	Joe Kruzal	Sunrise Bells	25
Gwen McNierney	Contrasting Nature and Man	24	Frank Rucki	Crashing Waves	24
Tim Donelan	Deerfield River View	24	Larry Sanchez	Egret	24
Guenther Schubert	End of Season	24	Tim Donelan	Mirror Lake View	24
Walt Lawrence	Orange You Glad I Came	24	Marie Meder	Peeking Through Trees	24
Steve Greenberg	Playing Through	24	Steve Greenberg	Drifting Ice	23
Stephan Platzer	Propeller in Snow	24	Al LaFleche	Fallen Leaves	23
Marie Meder	Stairway to Paradise	24	Amy Dane	Perfect Bubbles	23
			Stephan Platzer	Patterns in the Dirt	21

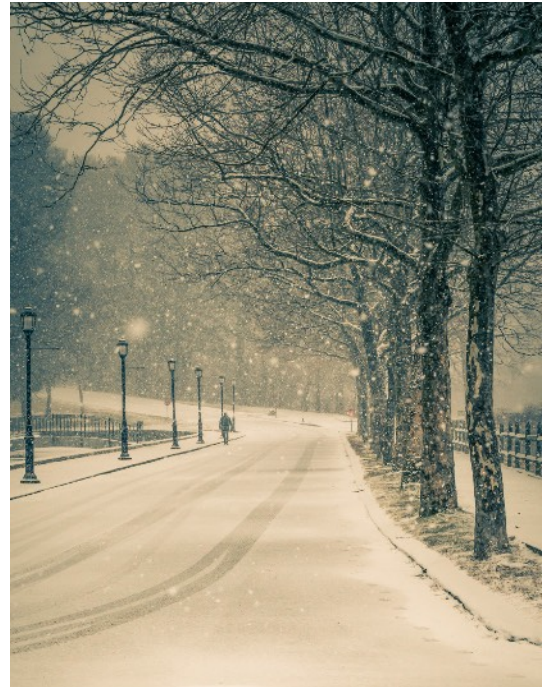


"Window Light" by Dave Roback was one of best entries in the digital Black & White category in the February exhibition.

Print exhibition images for February



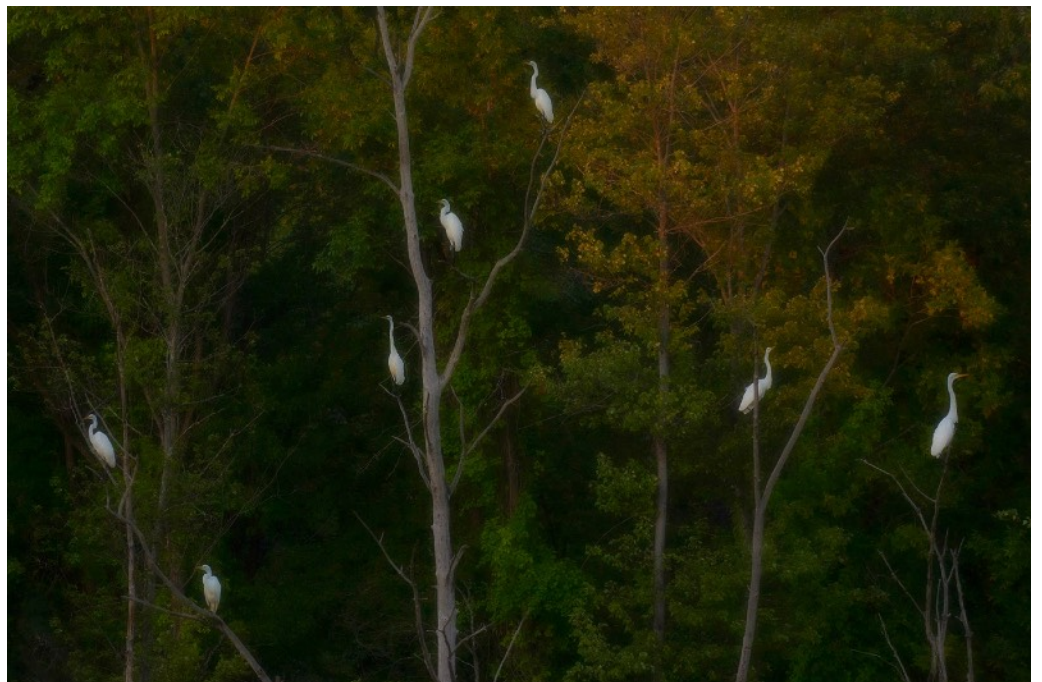
Leading off the best images in the February exhibition are, clockwise from above, "Two Pears" and "Forest Park in the Snow," both by Rosemary Polletta, and "The Stare" by Eileen Donelan.



Print exhibition images for February



Clockwise from above left,
"Posing Puffin" by Kevin Fay,
"Bryce Canyon Lit Up" by
Rosemary Polletta and
"Roosting Great Egrets" by
Rachel Bellenoit.



Print exhibition images for February



Clockwise from left,
"Wrapped in
Elegance" by
Rosemary Polletta,
"Painted Lotus" by
Eileen Donelan and
"Honakaa Tea" by
Kevin Fay.

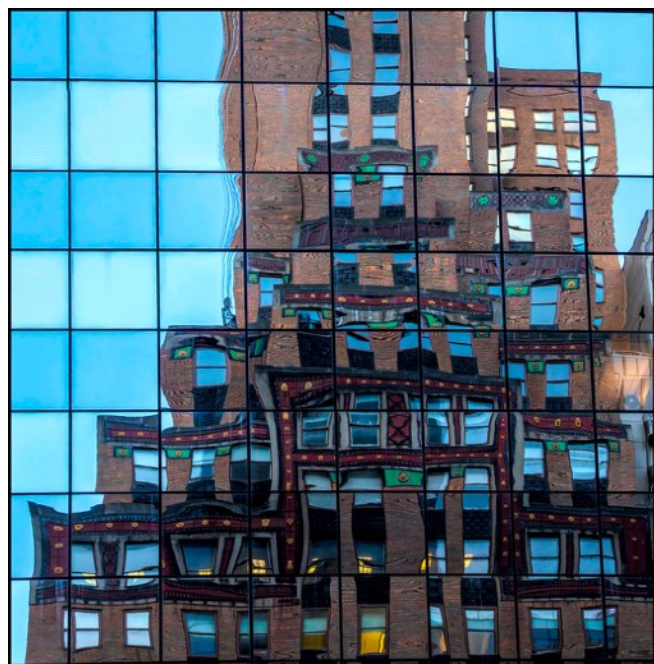


Digital exhibition images for February

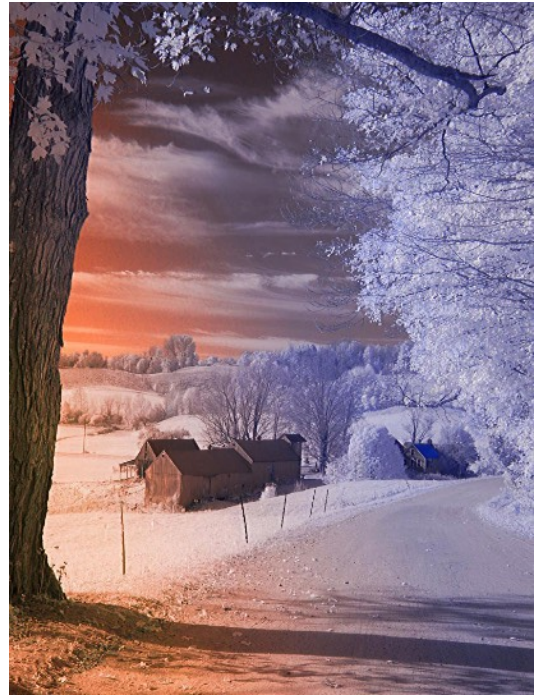
Artistic



Artistic images were highlighted by, clockwise from above, "From Garden Delight" by Richard Harper, "Flying to the Stars" by Jim Feroli, "Manhattan Reflection 2" by Kevin Fay, and "Red Tulips" by Barbara Krawczyk.



Artistic



Clockwise from top left, "Dressed for the Party" by Eileen Doherty, "Jenny Farm" by Judy Bolio, "Faded Glory" by Amy Dane, "Bodie Lighthouse" by Dave Roback and "Family Tree" by Pattie Freeman.

Black & White



"Escape the Heat," above, by Guenther Schubert, "Exploring the Fountain," right, by Gwen McNierney and "The Ace" by Al LaFleche were among the best in Black & White.



Black & White



Clockwise from left, "The Fiddler" by Tim Donelan, "Boot Scootin' Boogie" by Jim Feroli, "Bird in Hand" by Rachel Bellenoit, "Criss Cross" by Jim Gillen and "Waiting for Clients" by Amy Dane.



Challenge: Up in the Air

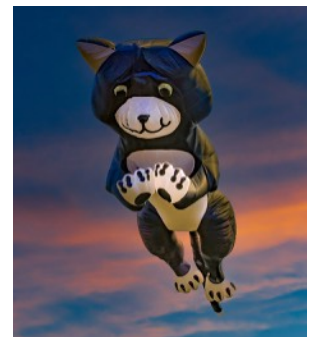


Leading the pack in the Challenge of Up in the Air were "Side by Side," above, by Joe Kruzel and "On the Toe" by Dave Roback.

Challenge: Up in the Air



Clockwise from left, "Updog Challenge" by Gwen McNierney, "Celestial Flower" by Jim Gillen, "When Cats Could Fly" by Frank Rucki and "Who Hung the Moon" by Jim Feroli.



General



Excellent entries in General included, clockwise from top, "Cape Crescent Moon" by Larry Sanchez, "Warm Cup of Sunshine" by Darlene Anderson and "Drummer's Breakfast Break" by Amy Dane.

General



Clockwise from top left, "She's in Charge" by Eileen Doherty, "Everybody Has a Camera" by Dave Roback, "The Guardian" by Joe Kruzel and "The Old Mare" by Rachel Bellenoit.



Nature



Among the top Nature entries, clockwise from above, "Mallard Drake" by Rachel Bellenoit, "On Golden Pond" by Pattie Freeman, "Balancing" by Eileen Doherty, "Tricolor Profile" by Barbara Krawczyk and "Gliding Flight" by Jim Feroli.



Nature



Clockwise from above, "Get My Good Side" by Darlene Anderson, "Winter Waterfall" by Richard Harper and "Oystercatcher on Nest" by Eileen Donelan.



**SPRINGFIELD PHOTOGRAPHIC SOCIETY
APPLICATION FOR MEMBERSHIP 2021-2022**

85th Year

Part I

NAME _____

SPOUSE/PARTNER 1st NAME _____

FAMILY NAMES (family membership) _____

ADDRESS _____

CITY, STATE, ZIP _____

PHONE (home) _____ (cell) _____

EMAIL _____

Add my email to private page on club website for member questions?

YES NO

NEW MEMBER RENEWAL

Membership Fees

Individual **\$40**

Family **\$55**

High School Student **Free**
(Copy of student ID required)

Additional Donation (Voluntary):

\$10

Other Donation \$ _____

I prefer to pay my dues at the historic rate:

Individual **\$35**

Family **\$50**

PSA MEMBER? Yes No

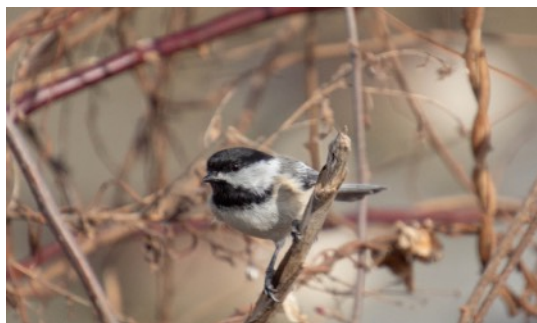
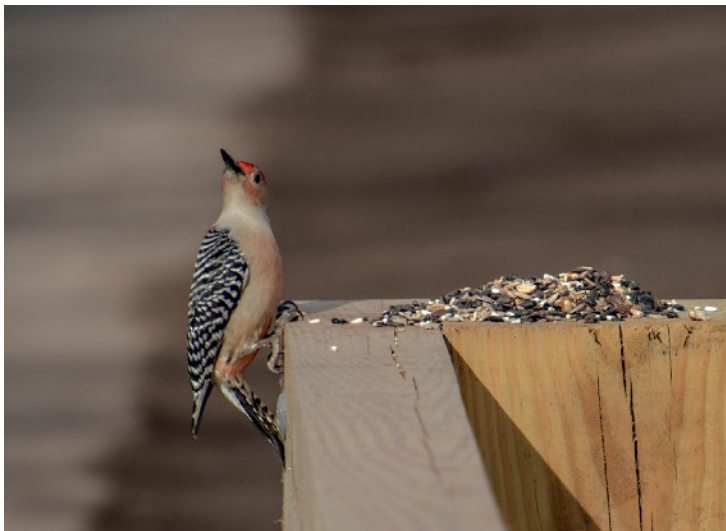
Part II

Springfield Photographic Society Field Trip Release Form

I (we), the undersigned, understand that the Springfield Photographic Society requires participants to share responsibility for their own safety and the safety of others during field trips. We hereby acknowledge that as participants in field trips we may be exposed to risks, including but not limited to, vehicular travel over land and water, foot travel over difficult terrain, and unexpected weather conditions. We may also encounter hazardous plants, wildlife, and/or insects. In the event of injury, we understand that we may face delays in reaching professional medical help. We fully accept these risks and agree to hold the Springfield Photographic Society, its officers, directors, volunteers, and agents free from any and all liability for injuries and/or loss which we may incur, directly or indirectly, while on a trip.

<i>Signature</i>	<i>Printed Name</i>	<i>In Case of Emergency (Provide a name and phone number)</i>

Please make your check payable to **Springfield Photographic Society**
Mail to SPS Treasurer **Carol Reed, 395 Porter Lake Dr. #306, Longmeadow, MA 01106**
(or bring them to the next meeting)



Al LaFleche shoots a woodpecker and chickadee at Fannie Stebbins Wildlife Refuge in Longmeadow. (Richard Harper photo)

SPS Officers and Directors

Elected positions

President	Kevin Fay
Vice President (Prints)	Dee Nacewicz
Vice President (Projected Images)	Larry Sanchez
Treasurer	Carol Reed
Secretary	Carol Reed
Directors	Tim Donelan, Joyce Doty, Denis Duquette, Jim Gillen, Richard Harper, Al LaFleche

Appointed positions

Judge Coordinator/Exhibition Standards	Barbara Krawczyk
Loomis Gallery Curator	Rosemary Polletta
Membership Chair	Carol Reed
NECCC Representative	Richard Harper
Newsletter Editor	Jim Gillen
Social Media	Nick DeCondio
Trip Coordinator	Open
Website Manager	Open

EXPOSURES

Exposures is the monthly newsletter of the Springfield Photographic Society. SPS is affiliated with the Photographic Society of America and the New England Camera Club Council. Society meetings, usually held at Loomis Lakeside at Reed's Landing, 807 Wilbraham Road, Springfield, at 7 p.m. on the 2nd and 4th Wednesdays of each month, September through May, are now conducted on Zoom. The SPS website is <https://springfield-ps.com>. President Kevin Fay can be reached at kevin.fay44@gmail.com



Member